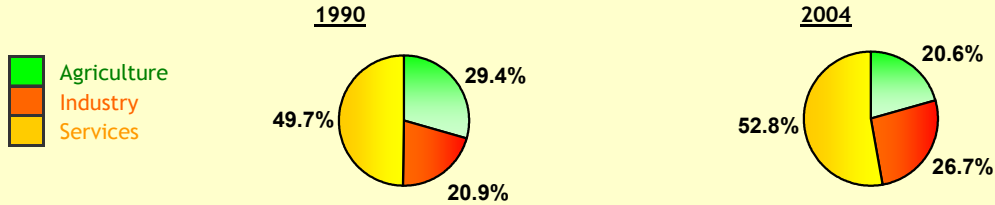


BANGLADESH

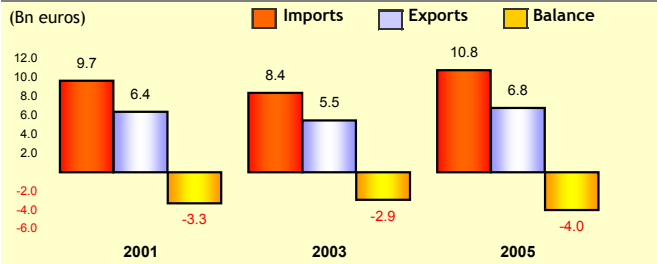
Population		152.0 Mio inhabitants			
Area		148 (1000qkm)			
Gross domestic product	2005	49 Bn euros	Exports-to-GDP ratio:	13.8	% in 2005
GDP per capita	2005	324 Euros			
<small>(IMF, World Economic Outlook)</small>					
Real GDP (% growth)			2002	2003	2004
Inflation rate (%)			4.8	5.8	5.9
Current account balance (% of GDP)			3.8	5.4	6.1
			2005		
			0.3	0.2	-0.3
					-0.9

GDP BY SECTOR



Source: World Bank (WDI)

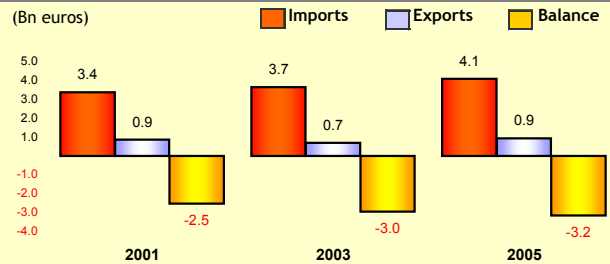
BANGLADESH MERCHANDISE TRADE WITH THE WORLD



Source: IMF (Direction of Trade Statistics)

* excl intra EU Trade

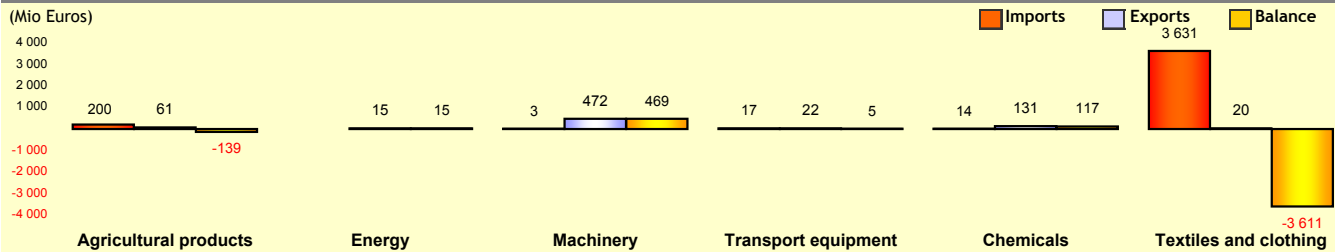
EU25 MERCHANDISE TRADE WITH BANGLADESH



Source: Eurostat, statistical regime 4

% OF THE WORLD *	2001			2003			2005		
	Imports	Exports	Balance	Imports	Exports	Balance	Imports	Exports	Balance
Imports	0.17	0.12	-0.05	0.20	0.14	-0.06	0.19	0.13	-0.06
% OF EU TOTAL									
Imports	0.34	0.10	-0.24	0.39	0.08	-0.31	0.35	0.09	-0.26
Exports									

EU25 MERCHANDISE TRADE WITH BANGLADESH BY PRODUCT (2005)



Source: Eurostat, statistical regime 4



BANGLADESH



EU BILATERAL TRADE AND TRADE WITH THE

15-sept-06

DG TRADE

(EU: 25 members, recalculated series since 2001)

TOTAL MERCHANDISE TRADE, 2001-2005

1. Evolution of the EU's Trade Balance with Bangladesh
2. Evolution of the Bangladesh's Trade Balance

GEOGRAPHIC BREAKDOWN OF TRADE, 2005

3. EU Trade with Main Partners
4. Bangladesh's Trade Balance with Main Partners

SECTORAL BREAKDOWN OF TRADE

Sitc Rev3, Sections and Product Grouping

5. European Union, Trade with the World and Bangladesh, by Sitc S
6. European Union Imports, by Product Grouping
7. European Union Exports, by Product Grouping
8. Rank of Bangladesh in European Union Trade

Harmonized System, Sections

9. EU Trade with the World and EU Trade with Bangladesh (2005)

EVOLUTION OF THE EU'S TRADE BALANCE WITH BANGLADESH

(Mio euro)

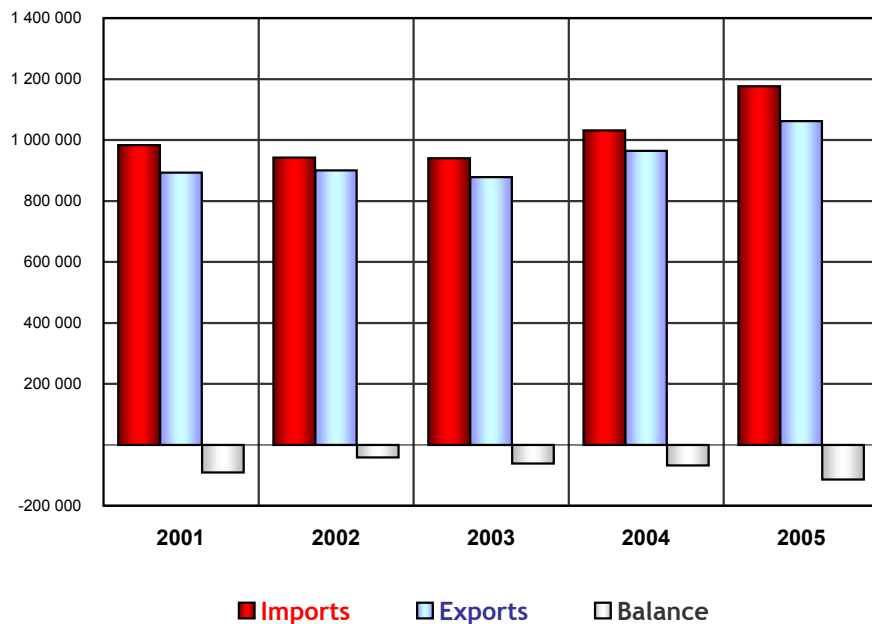
European Union, Trade with the World

Year	Imports	Yearly % change	Exports	Yearly % change	Balance	Imports + Exports
2001	983 443		892 720		-90 723	1 876 164
2002	941 885	-4.2	900 424	0.9	-41 462	1 842 309
2003	940 347	-0.2	878 483	-2.4	-61 864	1 818 830
2004	1 031 999	9.7	964 652	9.8	-67 347	1 996 652
2005	1 176 055	14.0	1 061 836	10.1	-114 219	2 237 891
3m 2005	262 361		234 231		-28 130	496 593
3m 2006	328 931	25.4	274 381	17.1	-54 550	603 313
Average annual growth		4.6		4.4		4.5

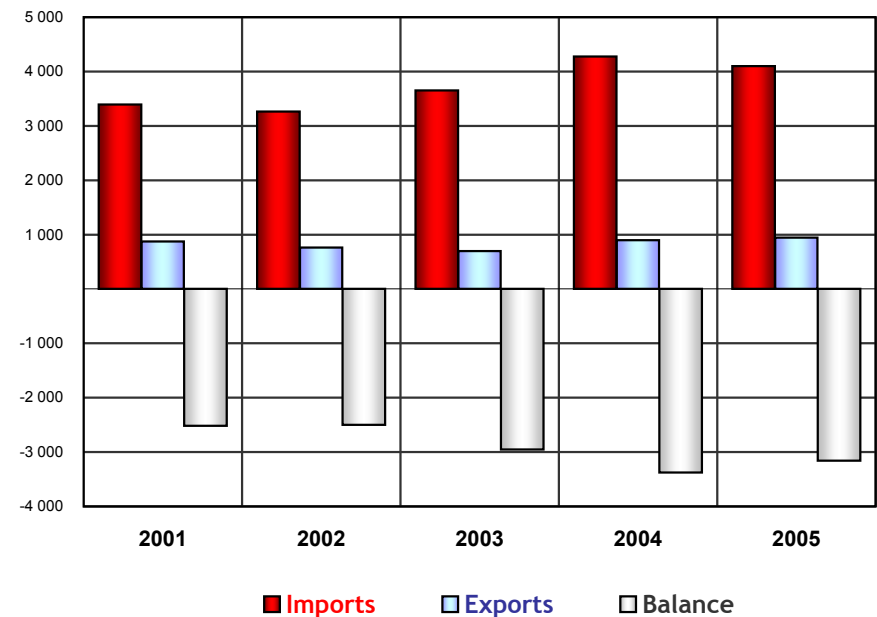
European Union, Trade with ... Bangladesh

Year	Imports	Yearly % change	Share of total EU imports	Exports	Yearly % change	Share of total EU exports	Balance	Imports + Exports
2001	3 391		0.34	872		0.10	-2 518	4 263
2002	3 261	-3.8	0.35	762	-12.7	0.08	-2 500	4 023
2003	3 653	12.0	0.39	699	-8.3	0.08	-2 954	4 352
2004	4 274	17.0	0.41	896	28.3	0.09	-3 377	5 170
2005	4 102	-4.0	0.35	946	5.6	0.09	-3 155	5 048
3m 2005	960		0.37	203		0.09	-756	1 163
3m 2006*	1 304	35.9	0.40	253	24.3	0.09	-1 051	1 557
Average annual growth		4.9			2.1			4.3

European Union, Trade with the World



European Union, Trade with ... Bangladesh



World excluding Intra-EU trade and European Union: 25 members.

EVOLUTION OF THE BANGLADESH'S TRADE BALANCE

(Mio euro)

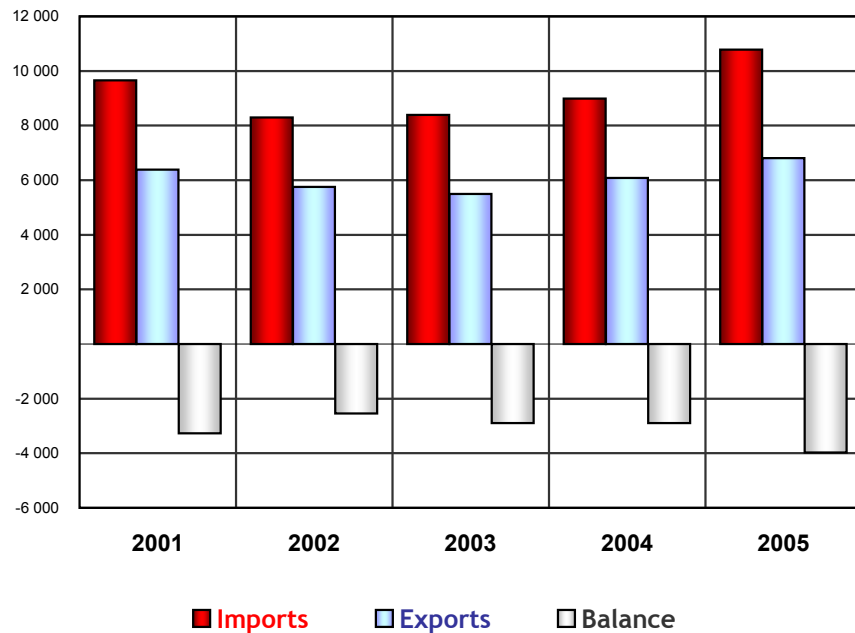
Bangladesh, Trade with the World

Year	Imports	Yearly % change	Exports	Yearly % change	Balance	Imports + Exports
2001	9 661		6 388		-3 273	16 048
2002	8 298	-14.1	5 751	-10.0	-2 547	14 049
2003	8 386	1.1	5 493	-4.5	-2 894	13 879
2004	8 985	7.1	6 086	10.8	-2 899	15 071
2005	10 781	20.0	6 813	12.0	-3 968	17 594
3m 2005	2 616		1 542		-1 073	4 158
3m 2006	3 493	33.6	2 395	55.3	-1 099	5 888
Average annual growth		2.8		1.6		2.3

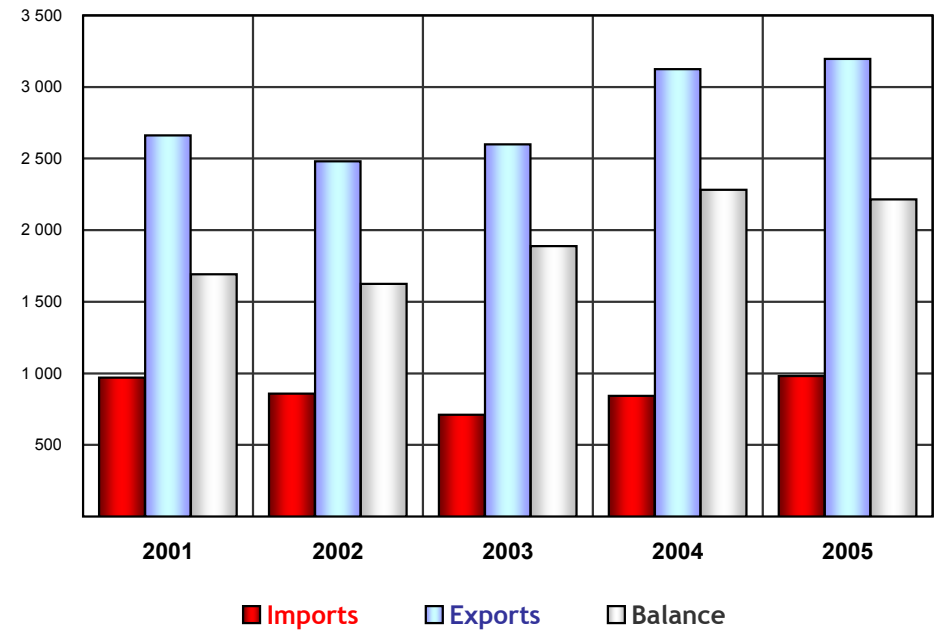
Bangladesh, Trade with the European Union

Year	Imports	Yearly % change	EU Share of total imports	Exports	Yearly % change	EU Share of total exports	Balance	Imports + Exports
2001	970		10.04	2 663		41.68	1 692	3 633
2002	857	-11.6	10.33	2 481	-6.8	43.14	1 624	3 338
2003	711	-17.1	8.47	2 599	4.8	47.32	1 888	3 310
2004	842	18.5	9.37	3 124	20.2	51.33	2 282	3 966
2005	982	16.6	9.11	3 197	2.3	46.93	2 215	4 179
3m 2005	255		9.76	764		49.53	509	1 019
3m 2006	301	17.8	8.61	1 160	51.9	48.44	859	1 461
Average annual growth		0.3			4.7			3.6

Bangladesh, Trade with the World



Bangladesh, Trade with the European Union



European Union: 25 members.

EU TRADE WITH MAIN PARTNERS

(2005)

The major imports partners

Partners	Mio euro	%
World	1 176 055	100.0
1 USA	163 057	13.9
2 China	158 098	13.4
3 Russia	106 766	9.1
4 Japan	73 243	6.2
5 Norway	67 474	5.7
6 Switzerland	66 354	5.6
7 Turkey	33 492	2.8
8 Korea	33 326	2.8
9 Taiwan	23 835	2.0
10 Brazil	23 300	2.0
11 Saudi Arabia	22 092	1.9
12 Algeria	20 735	1.8
13 Libya	19 473	1.7
14 India	18 911	1.6
15 Singapore	18 219	1.5
16 Canada	17 174	1.5
17 South Africa	16 731	1.4
18 Malaysia	15 905	1.4
19 Romania	15 305	1.3
20 WA_AO	13 761	1.2
44 Bangladesh	4 102	0.3

The major export partners

Partners	Mio euro	%
World	1 061 836	100.0
1 USA	251 657	23.7
2 Switzerland	81 980	7.7
3 Russia	56 445	5.3
4 China	51 796	4.9
5 Japan	43 663	4.1
6 Turkey	41 849	3.9
7 Norway	33 787	3.2
8 United Arab Emir.	25 288	2.4
9 Canada	23 681	2.2
10 Romania	21 825	2.1
11 India	21 110	2.0
12 Australia	20 710	2.0
13 Hong Kong	20 434	1.9
14 Korea	20 130	1.9
15 South Africa	18 077	1.7
16 Singapore	17 227	1.6
17 Mexico	16 762	1.6
18 Brazil	15 987	1.5
19 Saudi Arabia	15 443	1.5
20 WA_AO	13 484	1.3
80 Bangladesh	946	0.1

The major trade partners

Partners	Mio euro	%
World	2 237 891	100.0
1 USA	414 714	18.5
2 China	209 894	9.4
3 Russia	163 211	7.3
4 Switzerland	148 334	6.6
5 Japan	116 906	5.2
6 Norway	101 261	4.5
7 Turkey	75 341	3.4
8 Korea	53 456	2.4
9 Canada	40 855	1.8
10 India	40 021	1.8
11 Brazil	39 287	1.8
12 Saudi Arabia	37 535	1.7
13 Romania	37 130	1.7
14 Taiwan	36 653	1.6
15 Singapore	35 447	1.6
16 United Arab Emir.	35 087	1.6
17 South Africa	34 808	1.6
18 Algeria	31 150	1.4
19 Hong Kong	31 109	1.4
20 Australia	30 182	1.3
54 Bangladesh	5 048	0.2

EU Imports from ...

Partner regions	Mio euro	%
World	1 176 055	100.0
NAFTA	189 219	16.1
Latin America	64 201	5.5
EU Candidates	58 061	4.9
EFTA	136 648	11.6
Medit.Countries*	54 679	4.6
ASEAN	70 809	6.0

EU Exports to ...

Partner regions	Mio euro	%
World	1 061 836	100.0
NAFTA	292 100	27.5
Latin America	54 557	5.1
EU Candidates	81 216	7.6
EFTA	119 333	11.2
Medit.Countries*	59 822	5.6
ASEAN	44 966	4.2

Imports + Exports

Partner regions	Mio euro	%
World	2 237 891	100.0
NAFTA	481 319	21.5
Latin America	118 758	5.3
EU Candidates	139 277	6.2
EFTA	255 981	11.4
Medit.Countries*	114 502	5.1
ASEAN	115 775	5.2

NAFTA: Canada, Mexico, USA.

Latin America: 20 countries.

EU Candidates: Bulgaria, Croatia, Romania, Turkey

EFTA: Iceland, Norway, Switzerland.

Mediterranean countries *excluding Turkey: Algeria, Cisjordanie Gaza, Egypt, Israel, Jordan, Lebanon, Morocco, Syria, Tunisia.

ASEAN: Brunei, Cambodia, Indonesia, Laos, Malaysia, Myanmar, Philippines, Singapore, Thailand, Vietnam.

World excluding Intra-EU trade and European Union: 25 members.

BANGLADESH'S TRADE BALANCE WITH MAIN PARTNERS

(2005)

The major import partners

Partners	Mio euro	%
World	10 781	100.0
1 India	1 568	14.5
2 China	1 503	13.9
3 EU	982	9.1
4 Kuwait	947	8.8
5 Singapore	685	6.4
6 Japan	459	4.3
7 Hong Kong	456	4.2
8 Korea	359	3.3
9 United Arab Emir.	284	2.6
10 USA	262	2.4
11 Thailand	254	2.4
12 Malaysia	241	2.2
13 Saudi Arabia	235	2.2
14 Indonesia	217	2.0
15 Australia	215	2.0
16 Switzerland	168	1.6
17 Uzbekistan	144	1.3
18 Russia	119	1.1
19 Pakistan	116	1.1
20 Argentina	77	0.7

The major export partners

Partners	Mio euro	%
World	6 813	100.0
1 EU	3 197	46.9
2 USA	1 610	23.6
3 Canada	221	3.2
4 India	96	1.4
5 Hong Kong	85	1.2
6 Turkey	61	0.9
7 Japan	52	0.8
8 Singapore	43	0.6
9 Pakistan	42	0.6
10 China	37	0.5
11 Iran	37	0.5
12 Australia	24	0.3
13 Saudi Arabia	21	0.3
14 Indonesia	19	0.3
15 Korea	18	0.3
16 United Arab Emir.	17	0.2
17 Mexico	17	0.2
18 Vietnam	17	0.2
19 Switzerland	17	0.2
20 Thailand	12	0.2

The major trade partners

Partners	Mio euro	%
World	17 594	100.0
1 EU	4 179	23.8
2 USA	1 873	10.6
3 India	1 664	9.5
4 China	1 541	8.8
5 Kuwait	952	5.4
6 Singapore	728	4.1
7 Hong Kong	540	3.1
8 Japan	511	2.9
9 Korea	377	2.1
10 United Arab Emir.	301	1.7
11 Canada	272	1.5
12 Thailand	266	1.5
13 Saudi Arabia	256	1.5
14 Malaysia	249	1.4
15 Australia	239	1.4
16 Indonesia	235	1.3
17 Switzerland	185	1.0
18 Pakistan	157	0.9
19 Uzbekistan	145	0.8
20 Russia	126	0.7

Imports from ...

Partner regions	Mio euro	%
World	10 781	100.0
NAFTA	313	2.9
Latin America	164	1.5
EU Candidates	50	0.5
EFTA	174	1.6
Medit.Countries*	20	0.2
ASEAN	1 453	13.5

Exports to ...

Partner regions	Mio euro	%
World	6 813	100.0
NAFTA	1 849	27.1
Latin America	28	0.4
EU Candidates	63	0.9
EFTA	26	0.4
Medit.Countries*	22	0.3
ASEAN	104	1.5

Imports + Exports

Partner regions	Mio euro	%
World	17 594	100.0
NAFTA	2 161	12.3
Latin America	192	1.1
EU Candidates	113	0.6
EFTA	200	1.1
Medit.Countries*	42	0.2
ASEAN	1 557	8.9

NAFTA: Canada, Mexico, USA.

Latin America: 20 countries.

EU Candidates: Bulgaria, Croatia, Romania, Turkey

EFTA: Iceland, Norway, Switzerland.

Mediterranean countries *excluding Turkey: Algeria, Cisjordanie Gaza, Egypt, Israel, Jordan, Lebanon, Morocco, Syria, Tunisia.

ASEAN: Brunei, Cambodia, Indonesia, Laos, Malaysia, Myanmar, Philippines, Singapore, Thailand, Vietnam.

European Union: 25 members.

EUROPEAN UNION, TRADE WITH THE WORLD AND BANGLADESH, BY SITC SECTION

(2005)

European Union, Imports from the World

Products (Sitc Sections) by order of importance	Mio euro	%
TOTAL	1 176 055	100.0
Machinery and transport equipment	375 952	32.0
Mineral fuels, lubricants and rel. Materials	249 695	21.2
Miscell. manuf. Articles	166 967	14.2
Manuf goods classif. chiefly by material	116 362	9.9
Chemicals and related prod., n.e.s.	93 872	8.0
Food and live animals	54 653	4.6
Crude materials inedible, except fuels	45 851	3.9
Commodit. and transactions n.e.c.	25 720	2.2
Beverages and tobacco	4 778	0.4
Animal and vegetable oils, fats and waxes	4 093	0.3

European Union, Imports from ... Bangladesh

Products (Sitc Sections) by order of importance	Mio euro	%	Share of total EU imports
TOTAL	4 102	100.0	0.3
Miscell. manuf. Articles	3 556	86.7	2.1
Manuf goods classif. chiefly by material	229	5.6	0.2
Food and live animals	189	4.6	0.3
Machinery and transport equipment	21	0.5	0.0
Chemicals and related prod., n.e.s.	14	0.3	0.0
Beverages and tobacco	7	0.2	0.2
Crude materials inedible, except fuels	6	0.1	0.0
Commodit. and transactions n.e.c.	5	0.1	0.0
Animal and vegetable oils, fats and waxes	0	0.0	0.0

European Union, Exports to the World

Products (Sitc Sections) by order of importance	Mio euro	%
TOTAL	1 061 836	100.0
Machinery and transport equipment	478 928	45.1
Chemicals and related prod., n.e.s.	163 339	15.4
Manuf goods classif. chiefly by material	133 539	12.6
Miscell. manuf. Articles	119 503	11.3
Mineral fuels, lubricants and rel. Materials	38 847	3.7
Food and live animals	35 126	3.3
Commodit. and transactions n.e.c.	28 663	2.7
Crude materials inedible, except fuels	19 440	1.8
Beverages and tobacco	16 111	1.5
Animal and vegetable oils, fats and waxes	2 420	0.2

European Union, Exports to ... Bangladesh

Products (Sitc Sections) by order of importance	Mio euro	%	Share of total EU exports
TOTAL	946	100.0	0.1
Machinery and transport equipment	509	53.7	0.1
Chemicals and related prod., n.e.s.	131	13.9	0.1
Miscell. manuf. Articles	76	8.1	0.1
Manuf goods classif. chiefly by material	58	6.1	0.0
Food and live animals	57	6.0	0.2
Crude materials inedible, except fuels	42	4.5	0.2
Mineral fuels, lubricants and rel. Materials	15	1.6	0.0
Commodit. and transactions n.e.c.	4	0.5	0.0
Beverages and tobacco	2	0.2	0.0
Animal and vegetable oils, fats and waxes	1	0.1	0.0

World excluding Intra-EU trade and European Union: 25 members.

EUROPEAN UNION IMPORTS, BY PRODUCT GROUPING

(Mio euro)

European Union, Imports from the World

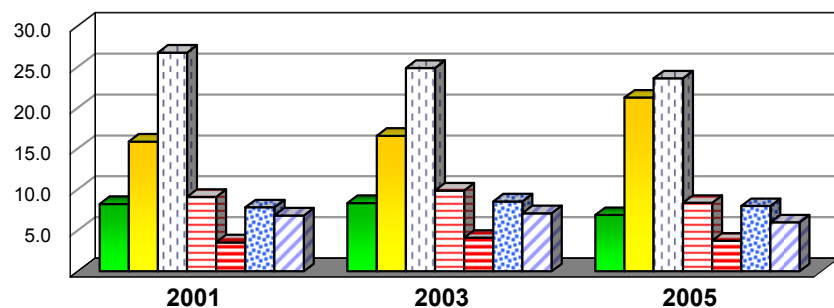
SITC Rev.3 Product Groups	2001	%	2003	%	2005	%
TOTAL	983 443	100.0	940 347	100.0	1 176 055	100.0
Primary Products	284 210	28.9	274 641	29.2	383 646	32.6
<i>of which:</i>						
Agricultural prod.	81 060	8.2	78 499	8.3	80 932	6.9
Energy	155 904	15.9	155 826	16.6	249 695	21.2
Manuf. Products	667 914	67.9	634 832	67.5	728 577	62.0
<i>of which:</i>						
Machinery	262 923	26.7	233 724	24.9	277 426	23.6
Transport equipm	89 425	9.1	92 898	9.9	98 526	8.4
<i>of which:</i>						
Automotive prod.	34 734	3.5	38 579	4.1	44 010	3.7
Chemicals	76 880	7.8	80 360	8.5	93 872	8.0
Textiles and cloth.	67 220	6.8	66 680	7.1	70 415	6.0

European Union, Imports from ... Bangladesh

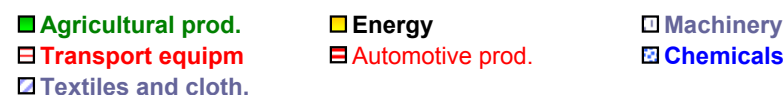
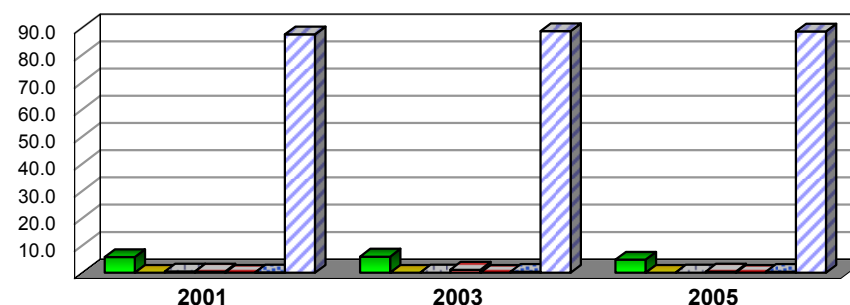
SITC Rev.3 Product Groups	2001	%	2003	%	2005	%	Share of total EU imports
TOTAL	3 391	100.0	3 653	100.0	4 102	100.0	0.35
Primary Products	197	5.8	218	6.0	202	4.9	0.05
<i>of which:</i>							
Agricultural prod.	196	5.8	217	5.9	200	4.9	0.25
Energy							
Manuf. Products	3 192	94.1	3 431	93.9	3 820	93.1	0.52
<i>of which:</i>							
Machinery	17	0.5	3	0.1	3	0.1	0.00
Transport equipm	15	0.4	42	1.1	17	0.4	0.02
<i>of which:</i>							
Automotive prod.		0.0		0.0		0.0	0.00
Chemicals	4	0.1	13	0.4	14	0.3	0.02
Textiles and cloth.	2 968	87.5	3 240	88.7	3 633	88.6	5.16

Structure of Imports (%)

from the World



from ... Bangladesh



World excluding Intra-EU trade and European Union: 25 members.

Source : EUROSTAT (Comext, Statistical regime 4)

Agricultural prod.: food&live animals incl.fish, beverages&tobacco, hides, skins&furskins, raw, oil seeds&oleaginous fruits, natural rubber..., cork&wood, silk, cotton, jute&other textile bast fibres..., veget.textile fibres (other than cotton).... wool. crude animal&vegetable materials. oil. fat **Energy**: mineral fuels etc **Manuf.products**: chemicals. basic manuf.excl.non-ferrous met. machines. transport equipm. misc.manuf.

DG TRADE

15-sept-06

EUROPEAN UNION EXPORTS, BY PRODUCT GROUPING

(Mio euro)

European Union, Exports to the World

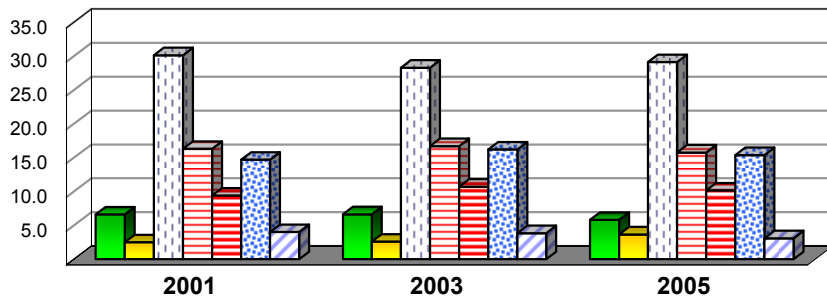
SITC Rev.3 Product Groups	2001	%	2003	%	2005	%
TOTAL	892 720	100.0	878 483	100.0	1 061 836	100.0
Primary Products	99 252	11.1	98 404	11.2	125 129	11.8
<i>of which:</i>						
Agricultural prod.	58 969	6.6	58 331	6.6	61 819	5.8
Energy	22 351	2.5	22 856	2.6	38 847	3.7
Manuf. Products	775 305	86.8	760 712	86.6	882 125	83.1
<i>of which:</i>						
Machinery	268 866	30.1	248 408	28.3	308 796	29.1
Transport equipm	145 563	16.3	146 766	16.7	167 386	15.8
<i>of which:</i>						
Automotive prod.	83 954	9.4	93 941	10.7	107 822	10.2
Chemicals	131 133	14.7	142 377	16.2	163 339	15.4
Textiles and cloth.	35 923	4.0	33 882	3.9	33 003	3.1

European Union, Exports to ... Bangladesh

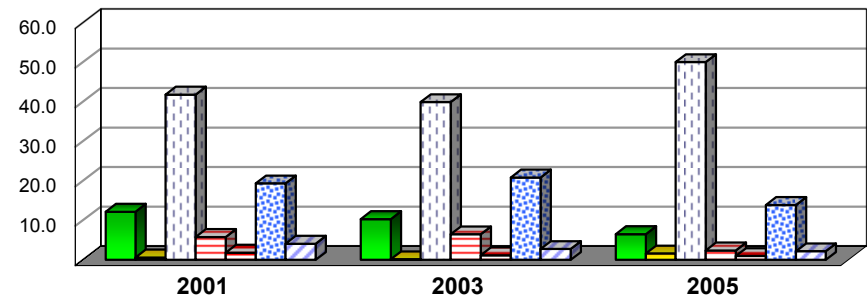
SITC Rev.3 Product Groups	2001	%	2003	%	2005	%	Share of total EU exports
TOTAL	872	100.0	699	100.0	946	100.0	0.09
Primary Products	129	14.8	86	12.3	121	12.8	0.10
<i>of which:</i>							
Agricultural prod.	106	12.1	72	10.3	61	6.5	0.10
Energy	5	0.6	1	0.1	15	1.6	0.04
Manuf. Products	714	81.8	586	83.9	771	81.4	0.09
<i>of which:</i>							
Machinery	364	41.8	278	39.8	473	50.0	0.15
Transport equipm	50	5.8	45	6.5	22	2.4	0.01
<i>of which:</i>							
Automotive prod.	16	1.8	8	1.2	9	1.0	0.01
Chemicals	168	19.3	145	20.8	131	13.9	0.08
Textiles and cloth.	36	4.1	19	2.7	20	2.1	0.06

Structure of Exports (%)

to the World



to ... Bangladesh



■ Agricultural prod. ■ Energy Machinery
 Transport equipm Automotive prod. Chemicals
 Textiles and cloth.

■ Agricultural prod. ■ Energy Machinery
 Transport equipm Automotive prod. Chemicals
 Textiles and cloth.

World excluding Intra-EU trade and European Union: 25 members.

Source: EUROSTAT (Comext, Statistical regime 4)

Agricultural prod.: food&live animals incl.fish, beverages&tobacco, hides, skins&furskins, raw, oil seeds&oleaginous fruits, natural rubber..., cork&wood, silk, cotton, jute&other textile bast fibres..., veget.textile fibres (other than cotton).... wool. crude animal&vegetable materials. oil. fat **Energy**: mineral fuels etc **Manuf.products**: chemicals. basic.manuf.excl.non-ferrous met. machines. transport equipm. misc.manuf.

DG TRADE

15-sept-06

RANK OF BANGLADESH IN EUROPEAN UNION TRADE

(2005)

European Union, Imports from ... Bangladesh

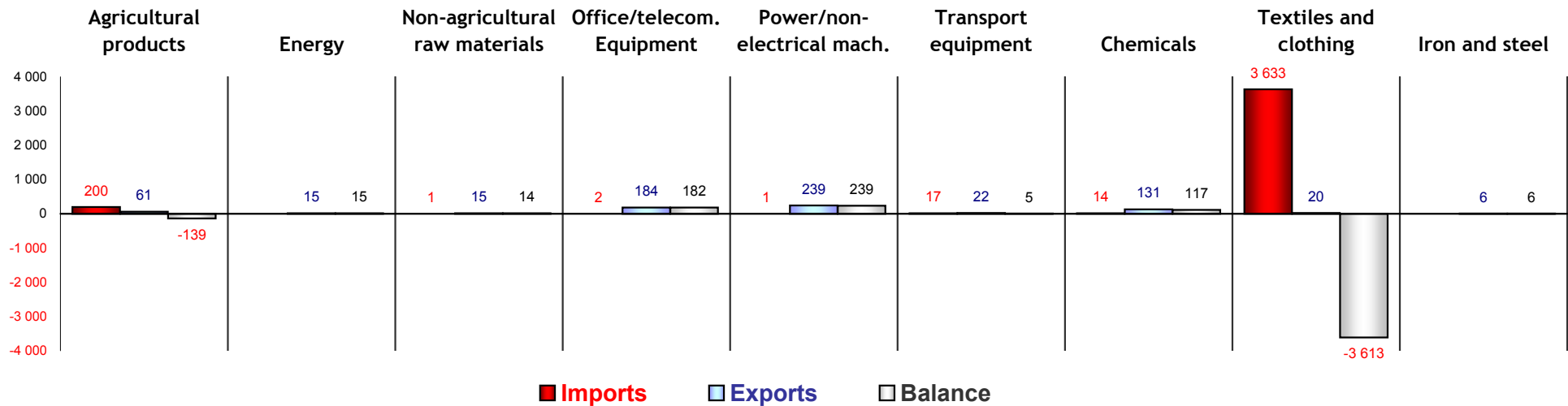
rank	SITC Rev.3 Product Groups	Mio euro	Share of total EU imports	%
40	TOTAL	4 102	0.35	100.0
62	Agricultural products	200	0.25	4.9
124	Energy			
44	Non-agricultural raw materials	1		
72	Office/telecom. Equipment	2	0.00	0.1
114	Power/non-electrical mach.	1	0.00	
79	Transport equipment	17	0.02	0.4
64	Chemicals	14	0.02	0.3
6	Textiles and clothing	3 633	5.16	88.6
79	Iron and steel		0.00	

European Union, Exports to ... Bangladesh

rank	SITC Rev.3 Product Groups	Mio euro	Share of total EU exports	%	Balance
76	TOTAL	946	0.09	100.0	-3 155
91	Agricultural products	61	0.10	6.5	-139
73	Energy	15	0.04	1.6	15
47	Non-agricultural raw materials	15	0.04	1.6	14
49	Office/telecom. Equipment	184	0.19	19.5	182
62	Power/non-electrical mach.	239	0.15	25.3	239
128	Transport equipment	22	0.01	2.4	5
67	Chemicals	131	0.08	13.9	117
69	Textiles and clothing	20	0.06	2.1	-3 613
92	Iron and steel	6	0.03	0.6	6

Share by products in EU 25 Total Trade excluding Intra-EU trade.

EU Trade with ... Bangladesh



EU TRADE WITH THE WORLD AND EU TRADE WITH BANGLADESH (2005)

(Ranking by Trade Flows in 2005)

EU Imports from ...				
Harmonized System	World	Bangladesh		
		Mio euro	%	Share of total EU imports
Sections:				
TOTAL	1 176 055	4 102	100.0	0.35
TDC XI	73 056	3 705	90.3	5.07
TDC I	17 041	171	4.2	1.00
TDC VIII	10 007	62	1.5	0.61
TDC XII	13 910	61	1.5	0.44
TDC XIII	8 220	17	0.4	0.21
TDC XVII	95 253	17	0.4	0.02
TDC VI	86 790	14	0.4	0.02
TDC IV	25 766	14	0.3	0.05
TDC II	27 449	12	0.3	0.04
TDC VII	29 488	8	0.2	0.03
TDC XVI	286 987	5	0.1	0.00
TDC XX	29 314	3	0.1	0.01
TDC XVIII	45 014	3	0.1	0.01
TDC XV	68 868	2	0.1	0.00
TDC IX	11 619	2		0.01
TDC X	13 670	1		0.01
TDC XIV	29 696			0.00
TDC XXI	3 119			0.00
TDC V	285 197			0.00
TDC III	3 924			0.00

EU Exports to ...				
Harmonized System	World	Bangladesh		
		Mio euro	%	Share of total EU exports
Sections:				
TOTAL	1 061 836	946	100.0	0.09
TDC XVI	324 117	504	53.3	0.16
TDC VI	147 203	122	12.9	0.08
TDC XV	70 977	60	6.4	0.08
TDC XVIII	51 712	40	4.3	0.08
TDC X	24 110	36	3.8	0.15
TDC XI	36 315	30	3.2	0.08
TDC IV	33 623	27	2.9	0.08
TDC I	12 370	24	2.6	0.20
TDC VII	41 346	18	1.9	0.04
TDC V	42 712	17	1.8	0.04
TDC XVII	161 947	17	1.8	0.01
TDC II	10 472	11	1.2	0.11
TDC XX	18 219	6	0.7	0.03
TDC XIII	15 228	4	0.4	0.03
TDC VIII	8 829	4	0.4	0.05
TDC XII	5 824	2	0.2	0.03
TDC III	2 492	1	0.1	0.04
TDC IX	8 387			0.01
TDC XIX	1 704			0.01
TDC XXI	4 279			0.00
TDC XIV	28 397			0.00

EU Balance with ...		
Harmonized System	World	Bangladesh
Sections:		
TOTAL	-114 219	-3 155
TDC XVI	37 130	499
TDC VI	60 413	108
TDC XV	2 109	58
TDC XVIII	6 698	38
TDC X	10 440	35
TDC V	-242 486	17
TDC IV	7 857	13
TDC VII	11 858	9
TDC XX	-11 095	4
TDC III	-1 432	1
TDC XVII	66 694	
TDC XXI	1 160	-
TDC XIV	-1 300	-
TDC II	-16 976	-1
TDC IX	-3 233	-1
TDC XIII	7 008	-13
TDC VIII	-1 178	-57
TDC XII	-8 085	-59
TDC I	-4 671	-146
TDC XI	-36 741	-3 675

Labels of TDC sections:

TDC I	Ch.01-05	Live animals; animal products	TDC XI	Ch.50-63	Textiles and textile articles
TDC II	Ch.06-14	Vegetable products	TDC XII	Ch. 64-67	Footwear, headgear, umbrellas, sun umbrellas, walking-sticks
TDC III	Ch.15	Animal or vegetable fats and oils and their cleavage products	TDC XIII	Ch.68-70	Articles of stone, plaster, cement, asbestos, mica or similar
TDC IV	Ch.16-24	Prepared foodstuffs; beverages, spirits and vinegar; tobacco ...	TDC XIV	Ch.71	Natural or cultured pearls, precious or semi-precious stones...
TDC V	Ch.25-27	Mineral Products	TDC XV	Ch.72-83	Base metals and articles of base metal
TDC VI	Ch.28-38	Products of the chemical or allied industries	TDC XVI	Ch.84-85	Machinery and mechanical appliances; electrical equipment; parts
TDC VII	Ch.39-40	Plastics and articles thereof of animal gut (other than silkworm gut)	TDC XVII	Ch.86-89	Vehicles, aircraft, vessels and associated transport equipment
TDC VIII	Ch.41-43	Raw hides and skins, leather materials; basketware and wickerwork	TDC XVIII	Ch.90-92	Optical, photo, cinema, measuring, checking, precision instrum...
TDC IX	Ch.44-46	Wood and articles of wood; wood charcoal; cork and articles of	TDC XIX	Ch. 93	Arms and ammunition; parts and accessories thereof
TDC X	Ch.47-49	Pulp of wood or of other fibrous cellulosic material; paper or paperboard	TDC XX	Ch.94-96	Miscellaneous manufactured articles
			TDC XXI	Ch.97	Works of art, collectors' pieces and antiques excl.chapter 99 other products

World excluding Intra-EU trade and European Union: 25 members.

DONNEES GRAPHIQUES SUR LES SERVICES

Graph non affiché pour ces régions:

#REF!		World
USA	214728	EFTA
Switzerland	77635	NAFTA
Japan	29080	APEC
Other		A. ASEM